

RENTAL RATES 1 NIGHT - Package 1 to 4 pers - 5€ by additional person (1/2 max)				
Period	Chalet Fabre	Mobile Home IRM & Helios	Mobil Home California	Tent Lodge
Except 13/07 – 16/08	72 €	65 €	62 €	57 €
13/07 – 26/07	95 €	90 €	85 €	75 €
27/07 – 16/08	120 €	115 €	110 €	90 €

RENTAL STAY ≥ 2 nights Package 1 to 4 persons Arrival 16 pm / Check out to plan between 8:30 am and 10:00 am	13/04	27/04	15/06		
	26/04	14/06	12/07	13/07	27/07
	----	----	----	----	----
	14/09	01/09	17/08	26/07	16/08
	29/09	13/09	31/08		
Chalet Fabre	55 €	60 €	70 €	90 €	116 €
Mobile Home IRM & Helios	49 €	54 €	64 €	85 €	109 €
Mobile home California	44 €	50 €	61 €	80 €	104 €
Tent Lodge Victoria	41 €	47 €	54 €	70 €	87 €
Additional person (1/2 max)	5 €	5 €	5 €	5 €	5 €

DISCOUNTS (except fee taxes)	
Rental reduction couple 1 week	: - 30 € except from 13/07 to 16/08
Rental & Pitch ≥ 2 weeks (except ACSI/ANWB/ADAC prices)	: - 5 % on all the stay
ACSI/ANWB/ADAC pitch	18 €, reduction FFCC : -10%/-5% in low/high season

DORMITORY TENT to share - 3 bunk beds => 6 beds You can share this tent with other guests and/or passing pilgrims.	
April, May, June & September	11 € / night / person / bed
July & August	13 € / night / person / bed

CAMPING PITCH – RATES 1 NIGHT For 1 person, 1 motorhome / 1 car + tent(s) / 1 car + 1 caravan With max 1 vehicle and 7/8 persons per pitch Nature/Privilège			
	13/04 30/06	01/07 12/07 --- 24/08 29/09	13/07 23/08
Nature without electricity (1 person)	10 €	11 €	17 €
Privilege ≥ 130m² without electricity (1 person)	15 €	16 €	20 €
Electricity	5 €	5 €	5 €
Additional person (≥ 12 years)	6 €	6 €	7 €
Additional person (2/11 years)	3 €	4 €	5 €
Child (< 2 ans)	free	free	free
Water tap and drain for waste	free	free	free

SUPPLEMENTS	
Deposit : entry badge (20 €), rental (300 €) - by cash, bank check, credit card	
No administration fees, fee taxes : 0,45 € by day/adult	
Chalet/Mobil Home : free TV	
Animal	
- 3 €/night for rental out of 13/07 – 16/08	
- 4 €/night for rental during the period 13/07 – 16/08	
- 2,50 €/night for pitch	
Visitor : registration and authorization at reception	
Cancellation insurance : FFCC - 78 rue de Rivoli - 75004 Paris – 01.42.72.84.08	

SERVICES	
Restricted Wifi : free access around reception, chalet TV/WIFI/library in open access	
Cleaning fee for rental (60€), disposable sheet set (6€), washing token (4€), dryer tokens (4€), washing powder (1€)	
Fridge (on stock/reservation) : 5€/day, self-service freezer at the reception for ice buns	
Equipment loan (on stock/reservation) with deposit : baby bed, high chair, adapter, extension cord, iron, kettle, toaster	
Free parking for additional car	
TTC Price - Heating, hot water & charges including	
Payments by cash, bank check, credit card and bank transfer	

For your comfort and leisure ...

PUBLIC BEACH

Bathing, bar/snack (high season)
Leisure center : canoes, pedalos, paddles, fishing
Water slipway

RECEPTION

Opening in low season : 8h30-12h00, 14h30-19h00
Opening july & august : 8h30-12h00, 14h00-19h30
Point information, postal mail, self-service freezer (for ice buns)
Loan books & games, rent/loan equipment
Free WIFI access (limited area around the reception)

FRIENDLY SPACE : Wifi access, TV, books, computer

3 TOILET BLOCKS with 1 for reduced mobility person, individual cabins, baby space

LAUNDRY : washing and drying machines, ironing board

Collective **BARBECUE** and picnic tables

PLAYGROUND : cross park, home ball, inflatable game, multi games front wall, trampolinos, ping-pong, volley, badminton, ...

Local SHOP

Bread & pastries, ice creams, drinks, wines, pizzas and chips to take away

SHOPS at 900 m and 1,5 km

Grocery, bakery with tobacco & press, restaurants, shops, local markets, ...

GUARD at place

ENVIRONMENT : selective sorting

HIKING

Acces to village and towpath on foot, on bike, on cruise
Many hiking trails

For everyone and in family ...

PARTNER REDUCTIONS

Castle, canoeing, speleology, horseback riding, boat, electric bicycle rent...

FREE ENTERTAINMENTS IN HIGH SEASON

Activities 6-12, cinema, games, sport tournaments, tours, evening parties, ...

PAID ACTIVITIES IN HIGH SEASON

Canoes, pedalos, paddles, children fishing initiation, ...



*Welcome in our Family Campsite.
Located at the foot of the classified site of St. Cirq Lapopie,
in the heart of the Regional Park,
3 hectares reveal you a panorama
in harmony with nature.
Overhanging cliffs, along the navigable river,
here is a place to relax
at the crossroads of all the discoveries
You will find peace, friendliness
and quality of many activities
for your enjoyment and well-being.*

« A small corner of paradise in a beautiful setting »

Cathy & Mickaël, Magalie & Sébastien

120 shady and/or sunny delimited pitches
including 27 rentals (chalets, mobile
homes, Lodge tents, 1 Dormitory tent)
Bar/ Snack / Restaurant
Playground, free Wifi
Public beach, swimming
Animations



Porte Roques 46330 Saint-Cirq-Lapopie
00 33 (0)5 65 30 29 51

www.campingplage.com

Siret 80115971600019 - Tva FR65801159716 - Ape 5530z

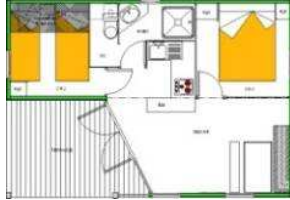


PITCHS



2 equipped toilet blocks (1 heated), 1 baby area, 1 child block
1 PMR toilet block for reduced mobility person
Laundry: washing and drying machines, ironing board
Electricity
Terminals with water
Area drain, chemical toilet, water

CHALETs



Chalet FABRE
± 37 m² - 4/6 persons - covered terrace
1 living room kitchen, chairs & bench
1 bedroom with 1 bed 2 persons
1 bedroom with 2 beds 1 person
1 sofa in living room with sleeping 2 persons
Bathroom, separate toilet

LODGE TENTS



PHOTO NON CONTRACTUELLE



TENT LODGE VICTORIA
± 30 m² - 4/5 person - 1 covered terrace
2 bedrooms (2x2.35m)
1 living room kitchen opened on the terrace (fridge + gas + microwave)
1 removable front panel with 2 doors and 2 large bays

MOBIL HOMES



MOBIL HOME IRM
± 27 m² - 4/6 persons
1 living room kitchen, seat + chairs
1 bedroom with 1 bed 2 persons
1 bedroom with 2 bed 1 person
1 sofa in living room with sleeping 2 people
Bathroom & separate toilet

MOBIL HOME IRM HELIOS for reduced mobility person
± 32 m² - 4/6 persons with at least 1 child (≥ 6 years)
1 living room kitchen, seat + chairs
1 bedroom with 2 pushed beds 1 person
1 bedroom with 1 bed 1 person + 1 child loft bed
1 sofa in living room with sleeping 2 persons
Bathroom with toilet (equipped for disabled person)

MOBIL HOME CALIFORNIA
± 27 m² - 4/7 persons with at least 1 child (≥ 6 years and <1,60m) - 1 covered terrace
1 living room kitchen, seat + chairs
1 bedroom with 1 bed 2 persons
1 bedroom with 2 beds 1 person + 1 child loft bed (≥ 6 yrs)
1 sofa in living room with sleeping 2 persons
Bathroom & separate toilet

IN RENTALS

Kitchenette : welcome kit, 5/6 person dishes kit, fridge, stainless sink, microwave, cooktops, cupboards.
Cleaning : broom, brush, shovel, bucket, basin, mop.
Blanket with mattress on each bed, pillow for each bed.
Separate bathroom and toilet (except for Lodge and Dormitory tents).
Radiator (except for Lodge and Dormitory tents).
Pitch : 1 car near, wooded area, garden furniture, drying rack, TV (except for Lodge and Dormitory tents)

Are not provided: cleaning products, toilet paper, towels and sheets trimmings.

RESPECT CONTRAT CONDITIONS

Campsite rules are displayed in the reception.
Campsite barrier is closed from 11 pm to 7 am.
Opening hours are displayed in the reception.

VISITORS should ask permission to visit at the reception.

PITCHS must be vacated for **11h45**.

RENTALS no smoking, INVENTORY CHECK OUT between 8h30 and 10h.
On arrival, take a check out appointment.

DEPARTURE CLEANING
Rental and pitch must be returned cleaned.

ANIMALS are allowed under the owners supervision and are forbidden in public places. They are leashed and feces are collected. It's forbidden to leave them alone in rentals and on pitches.

SUSTAINABLE DEVELOPMENT APPROACH

For the good of all, thank you to pay attention to the environment and energies economy.

NEARBY

30 km from Cahors, train station, airfield
Bus line Figeac-Cahors (910), bus stop : Tour de Faure (800 m)

Tour de Faure (900 m) : grocery, bakery with tobacco & press, restaurants, tennis, traveling cinema, ...

Saint Cirq Lapopie 1,5 km (pedestrian access) : cash machine, shops, galleries, restaurants, post office, tourism office, ...

Sport activities, hiking, canoe, speleology, canyoning, VTT, climbing, horse riding, ...
Regional natural park, tourist and artistic tours.
Cultural and festive evenings, votive festivals, gastronomy, markets, ...